

ARRIVAL

14 FEB 03

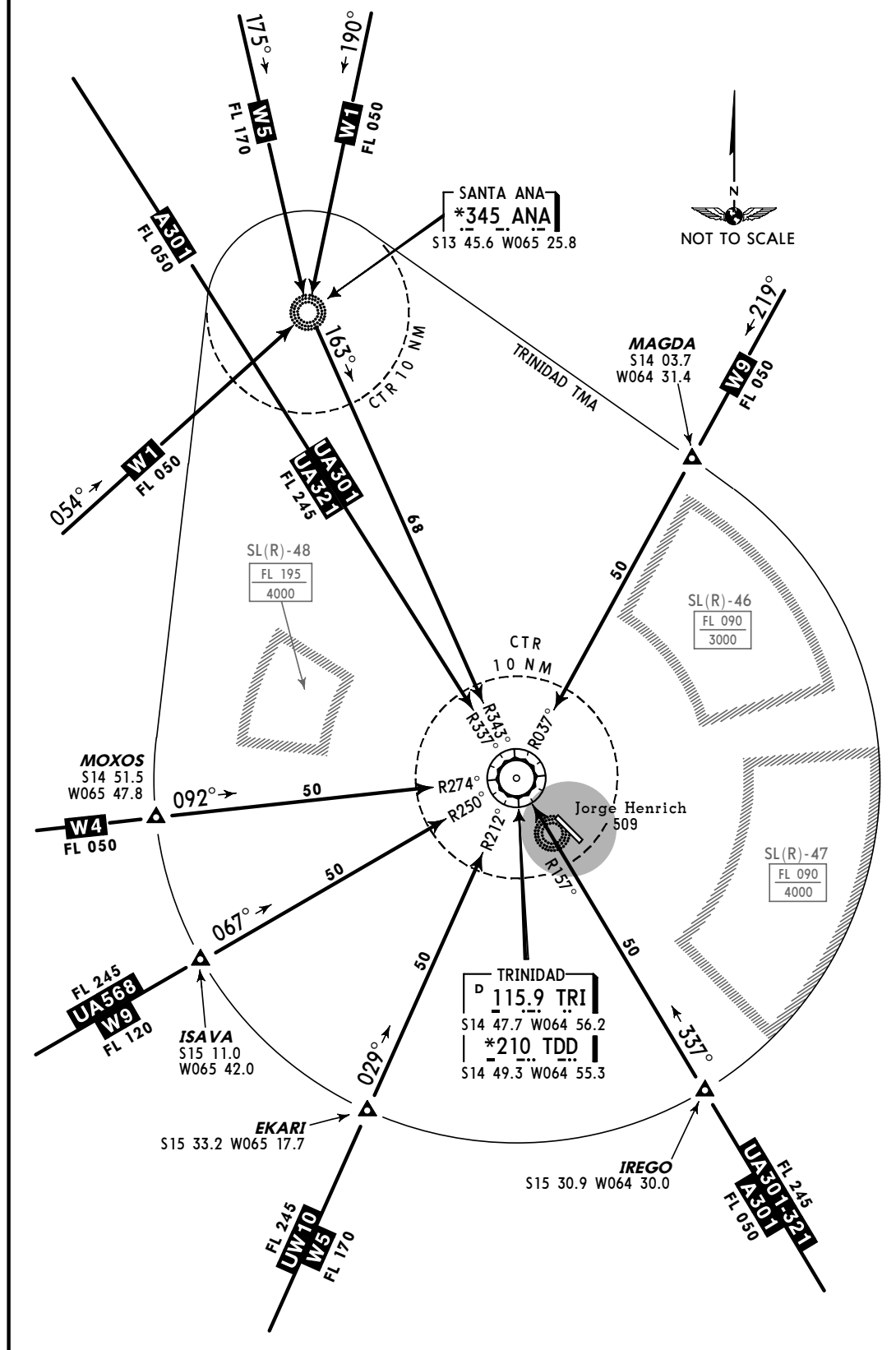
10-2

Eff 20 Feb

TRINIDAD, BOLIVIA

JORGE HENRICH

ARRIVAL ROUTES TO TRINIDAD TMA



© JEPPESEN SANDERSON, INC., 1987, 2003. ALL RIGHTS RESERVED.

PARA USO EN AVIACIÓN VIRTUAL ÚNICAMENTE

SID

JEPPESEN

14 FEB 03

10-3

Eff 20 Feb

TRINIDAD, BOLIVIA

JORGE HENRICH

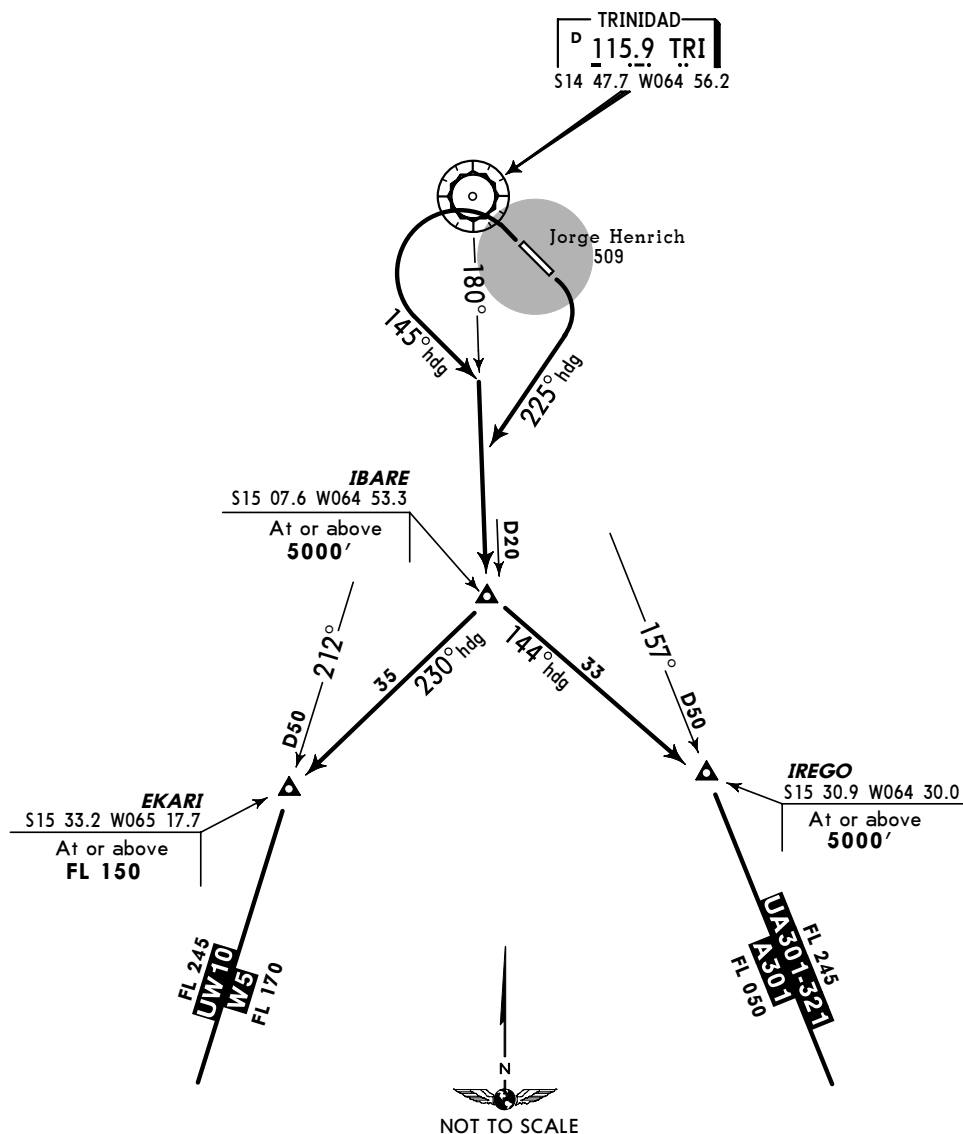
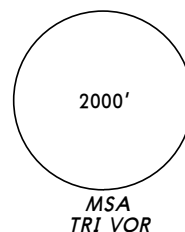
TRANS LEVEL: BY ATC
TRANS ALT: 5000'

IBARE 3 DEPARTURE

Rwy 14: After take-off, turn RIGHT to a heading of 225° to intercept TRI R-180 to Ibare Int, climbing to 5000'. From Ibare Int to Ekari Int heading 230°, cross Ekari Int at or above FL 150. From Ibare Int to Irego Int heading 144°, cross Irego Int at or above 5000'.

Rwy 32: After take-off, turn LEFT to a heading of 145° to intercept TRI R-180 to Ibare Int, climbing to 5000'. From Ibare Int to Ekari Int heading 230°, cross Ekari Int at or above FL 150. From Ibare Int to Irego Int heading 144°, cross Irego Int at or above 5000'.

Direct distance from Jorge Henrich Apt to:
Ibare Int **19 NM**



PARA USO EN AVIACIÓN VIRTUAL ÚNICAMENTE

SID**JEPPESEN**

14 FEB 03

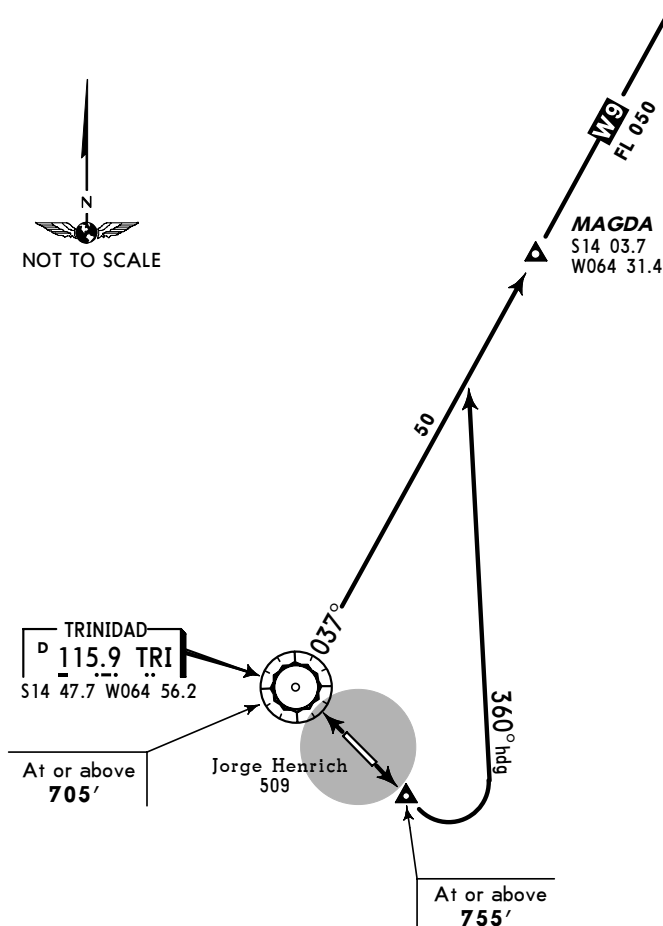
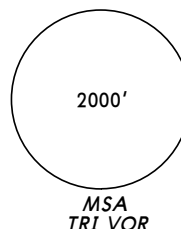
10-3A**Eff 20 Feb****TRINIDAD, BOLIVIA****JORGE HENRICH**TRANS LEVEL: BY ATC
TRANS ALT: 5000'

MAGDA 1 DEPARTURE

Rwy 14: After take-off **MAINTAIN** runway heading until at or above 755'. Turn **LEFT** to a heading of 360° to intercept TRI R-037 to Magda Int climbing to 5000'.

Rwy 32: After take-off **MAINTAIN** runway heading until TRI VOR, crossing at or above 705'. Turn **RIGHT** to intercept TRI R-037 to Magda Int.

Direct distance from Jorge Henrich Apt to:
Trinidad VOR **2 NM**



PARA USO EN AVIACIÓN VIRTUAL ÚNICAMENTE

SID

JEPPESEN

14 FEB 03

10-3B

Eff 20 Feb

TRINIDAD, BOLIVIA

JORGE HENRICH

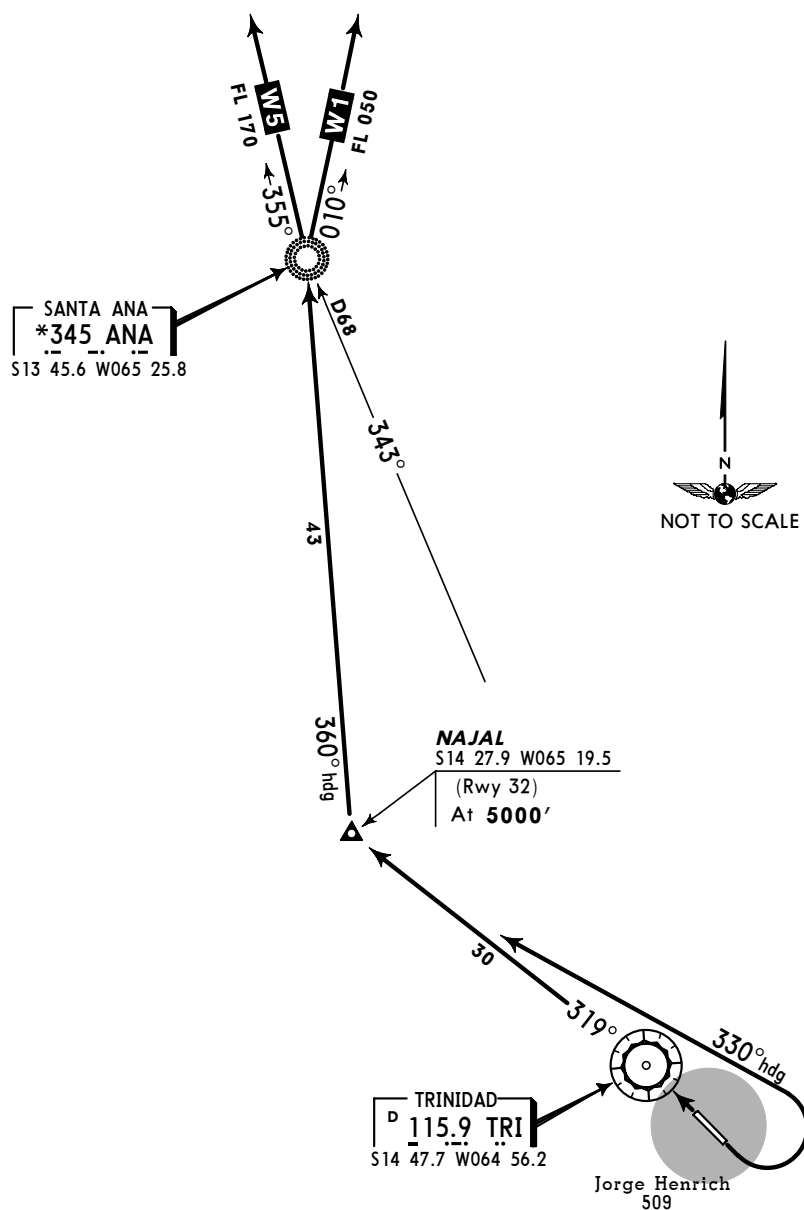
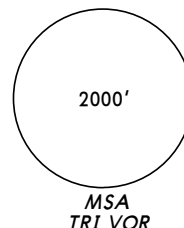
TRANS LEVEL: BY ATC
TRANS ALT: 5000'

NAJAL 4 DEPARTURE

Rwy 14: After take-off turn LEFT to a heading of 330° to intercept TRI R-319 to Najal Int climbing to 5000', then heading 360° to ANA NDB.

Rwy 32: After take-off turn to a heading of 319° to Najal Int, cross Najal Int at 5000', then heading 360° to ANA NDB.

Direct distance from Jorge Henrich Apt to:
Trinidad VOR **2 NM**



PARA USO EN AVIACIÓN VIRTUAL ÚNICAMENTE

SID

JEPPESEN

14 FEB 03

10-3C

Eff 20 Feb

TRINIDAD, BOLIVIA

JORGE HENRICH

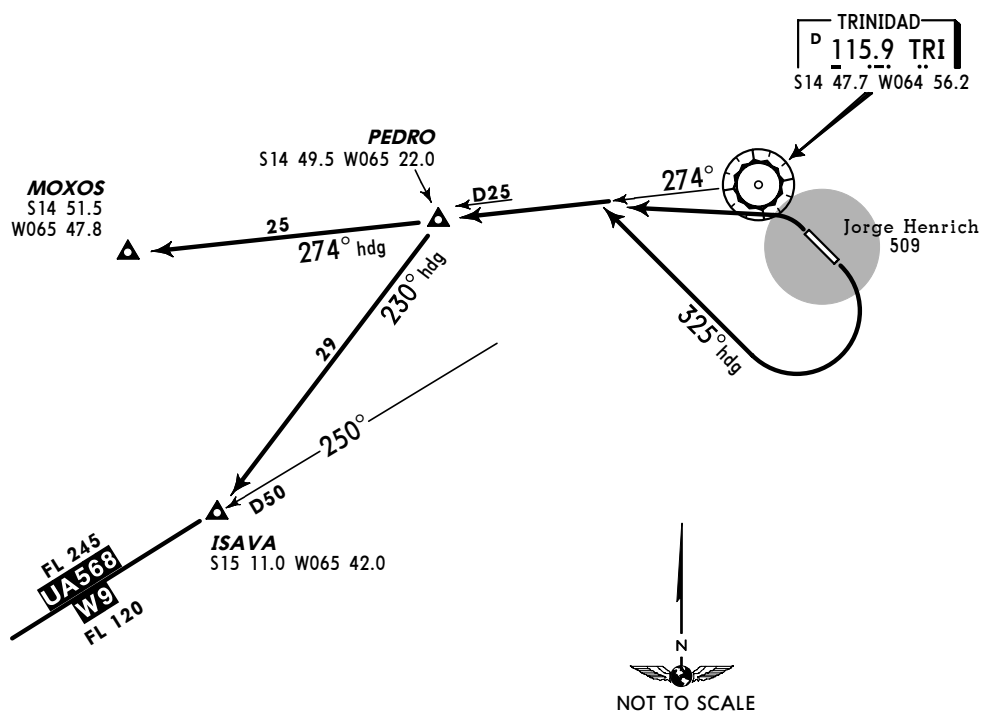
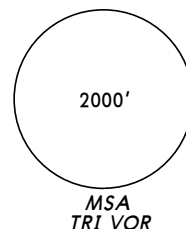
TRANS LEVEL: BY ATC
TRANS ALT: 5000'

PEDRO 3 DEPARTURE

Rwy 14: After take-off turn RIGHT to a heading of 325° to intercept TRI R-274 to Pedro Int climbing to 5000'. From Pedro Int to Moxos Int heading 274°. From Pedro Int to Isava Int heading 230°.

Rwy 32: After take-off turn LEFT to intercept TRI R-274 to Pedro Int climbing to 5000'. From Pedro Int to Moxos Int heading 274°. From Pedro Int to Isava Int heading 230°.

Direct distance from Jorge Henrich Apt to:
Pedro Int **26 NM**



TRINIDAD, BOLIVIA
VOR DME-2 Rwy 14

© JEPPESEN SANDERSON, INC., 2003. ALL RIGHTS RESERVED.

TRINIDAD, BOLIVIA
NDB-2 Rwy 14

BRIEFING STRIP™



PANS OPS

© JEPPESEN SANDERSON, INC., 2003. ALL RIGHTS RESERVED.

PARA USO EN AVIACIÓN VIRTUAL ÚNICAMENTE

SLTR/TDD

Apt Elev **509'**

141.1°/1.9 From TRI 115.9

JEPPESEN

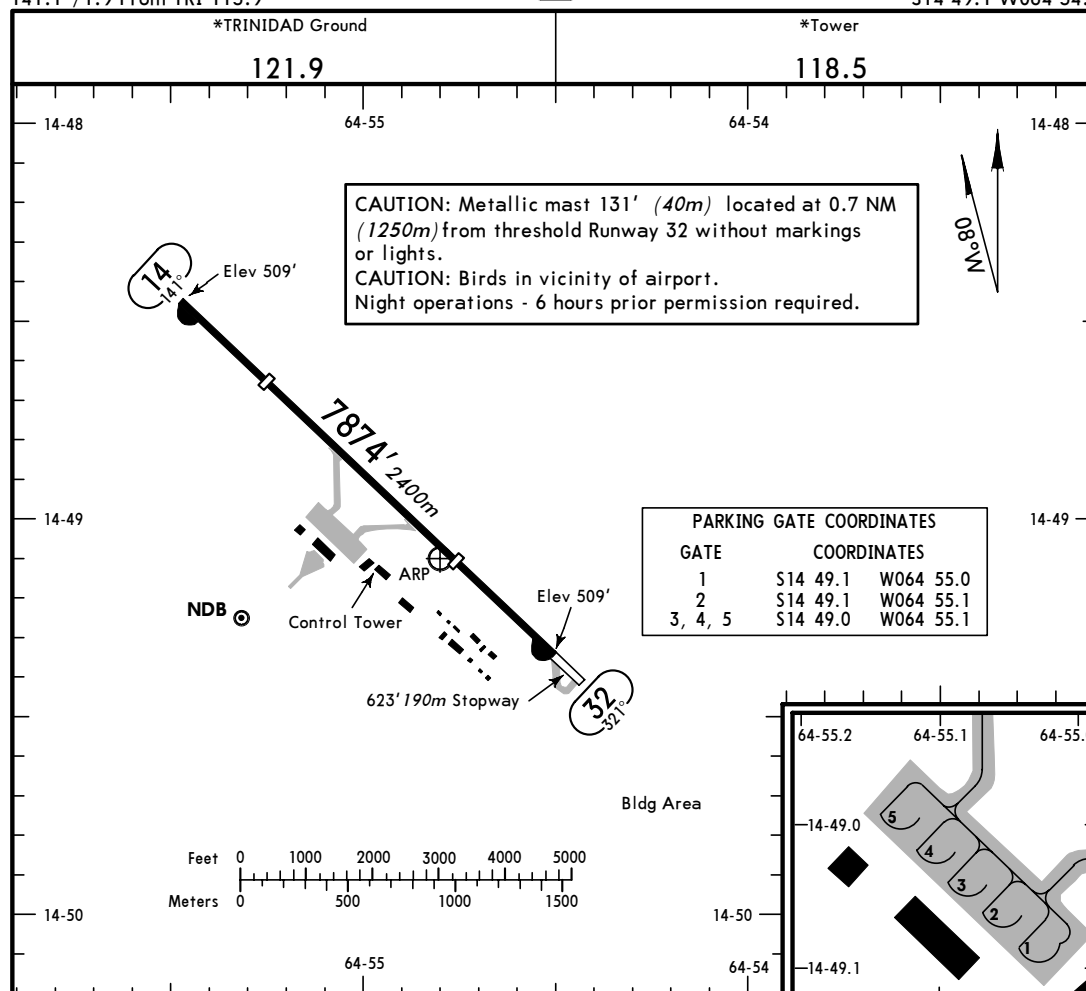
21 NOV 03

(13-1)

TRINIDAD, BOLIVIA

JORGE HENRICH

S14 49.1 W064 54.8



ADDITIONAL RUNWAY INFORMATION

RWY		USABLE LENGTHS		TAKE-OFF	WIDTH
		LANDING BEYOND Threshold	Glide Slope		
14	ALS PAPI-L (angle 3.00°)	6070' 1850m			98'
32		5797' 1767m			30m

TAKE-OFF			FOR FILING AS ALTERNATE	
All Rwys				
	AIR CARRIER	GENERAL AVIATION		
2 Eng	500m	190m - 2.4 km	A	335m - 4.4 km
3 & 4 Eng	400m		B	
		C		
		D		

CHANGES: See other side.

© JEPPESEN SANDERSON, INC., 2003. ALL RIGHTS RESERVED.